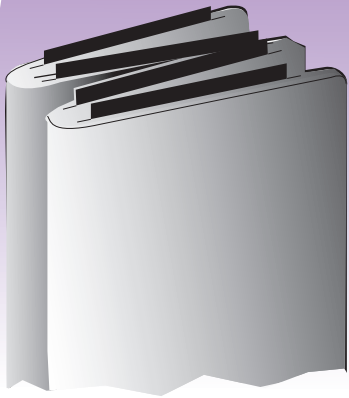


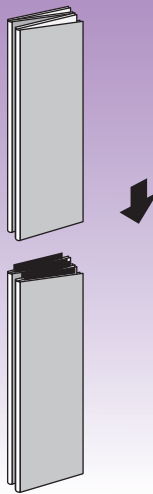
Rennaisance 10' Set-Up Instructions

1



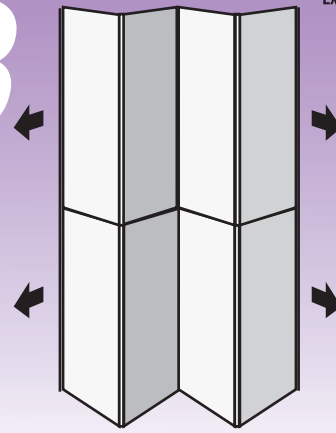
Locate **Four Panel Base** section (footed channels on bottom). Stand on feet and fold panels to form an accordion or zig zag. **Insert stacking guides** into groves in top of base panels.

2

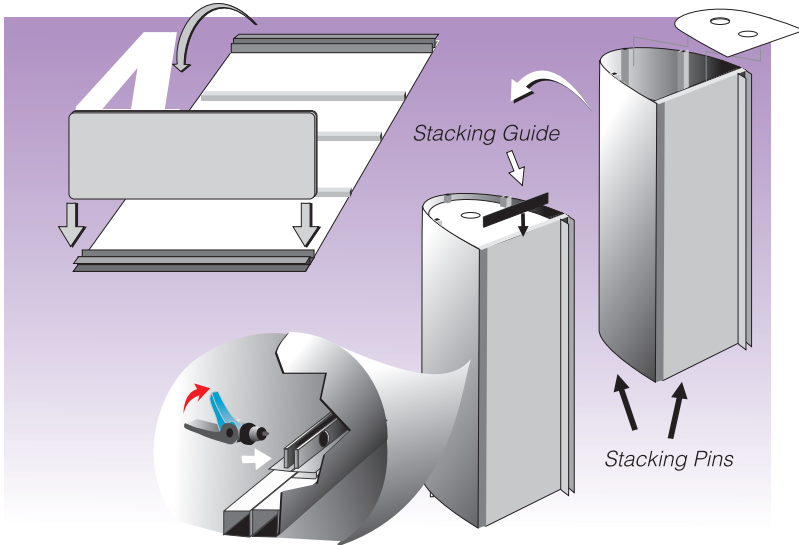


Rest upper section on base section. **Aligning upper panels to lower, work each panel onto corresponding guide on base panel.**

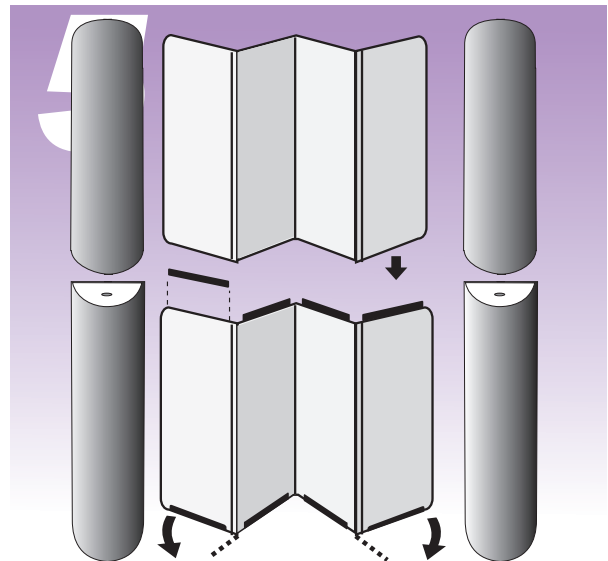
3



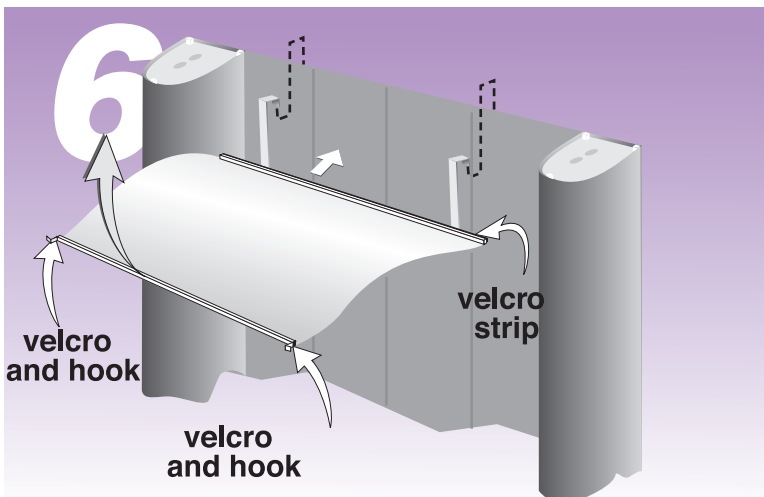
Unfold panels. Push center hinge forward and slide side panels forward, eventually this will form the back wall of the display for now leave the panels in a slight zig zag pattern.



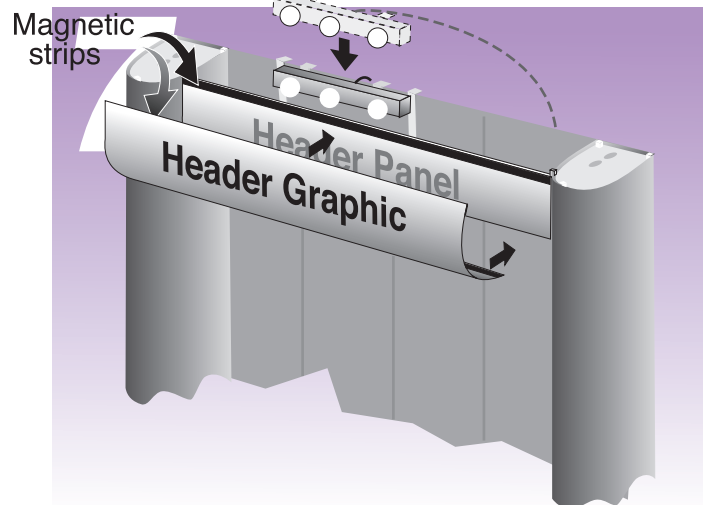
Place the **“swell latch”** into the hole in the latch plates. and flip the lever, securing it. Next, place the **“hubs”** into the ends of the openings to keep their shape



Sides swing forward after top section is joined. Be sure to leave some angle to the panels until the end panels are attached.



The flexible header panel attaches by hooks over the top of the units' back, then the **velcro strip** “locks” it into place. Roll the front of the translucent header up and attach its **velcro** to the end curves. The small hook attaches over the top of the curve.



Finally, place the light bar onto the back of the unit just like the header panel. The graphic snaps onto the Header Panel with magnetic strips.