

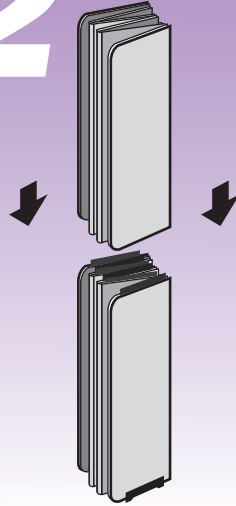
Independence Set-Up Instructions

1



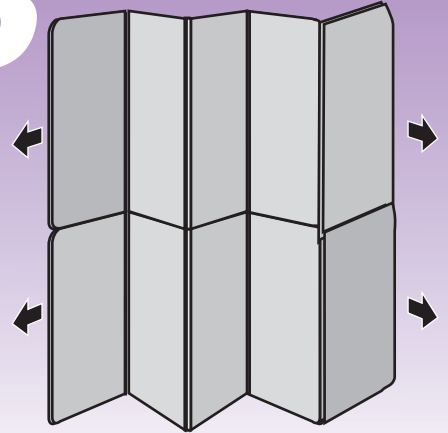
Locate **Five panel Base** section (footed channels on bottom). Stand on feet and fold panels to form an accordion or zig zag effect. **Insert stacking guides** into groves in top of base panels. Fold matching **FivePanel Top** section as above and lower onto base. The stacking guides insure proper alignment of upper and lower panels.

2

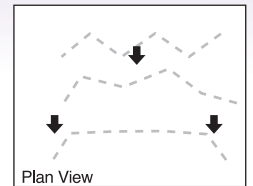


Rest upper section on base section. **Aligning upper panels to lower, work each panel onto corresponding guide on base panel.**

3

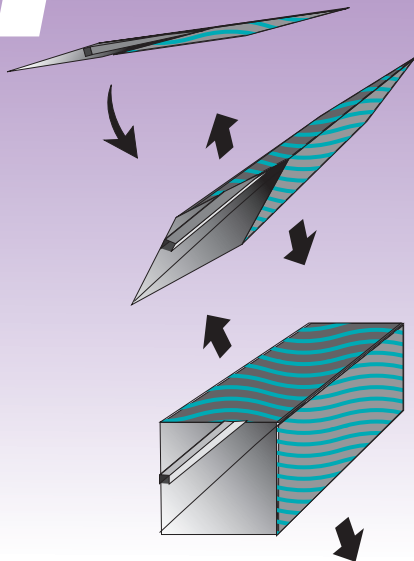


Unfold panels. Push center panel forward and slide side panels forward moving them into the basic shape shown in the Plan View.



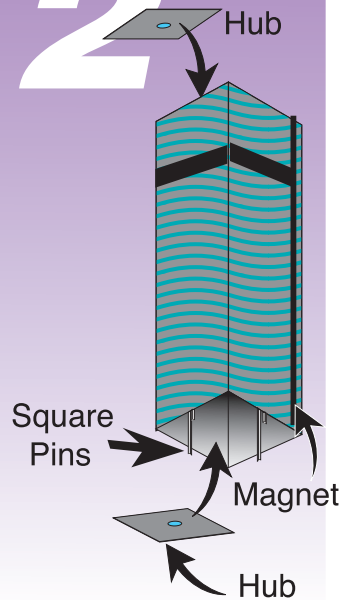
Square Column Set-Up Instructions

1



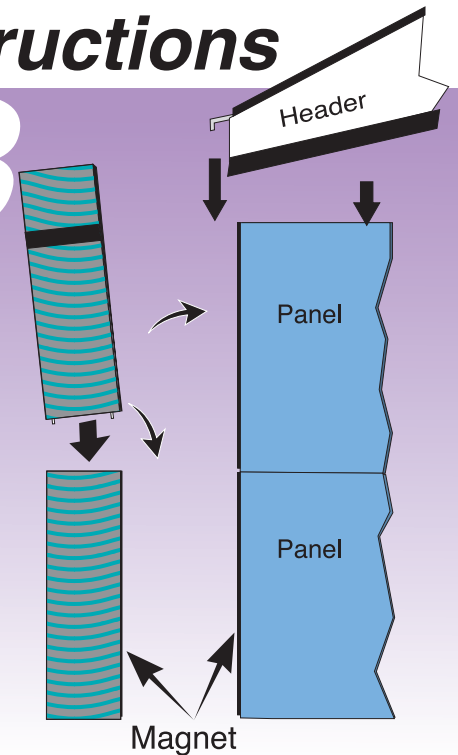
First, pull the **flattened** square columns out into a **square shape**...

2



Next, place the **Hubs** into the columns, this will keep their square shape while standing.

3



Now, place the top column onto the bottom column. The **square pins** in the lower end of the top column section fit **into the square channels** in the bottom column section. After the panel sections are completed, the columns can be **snapped into place** using the **magnets** on the sides of both column and panels.

Visit goExpogo.com

EXPOGO!
ExpoStar® Prezenta® ArchiForm®

(800)-891-1869