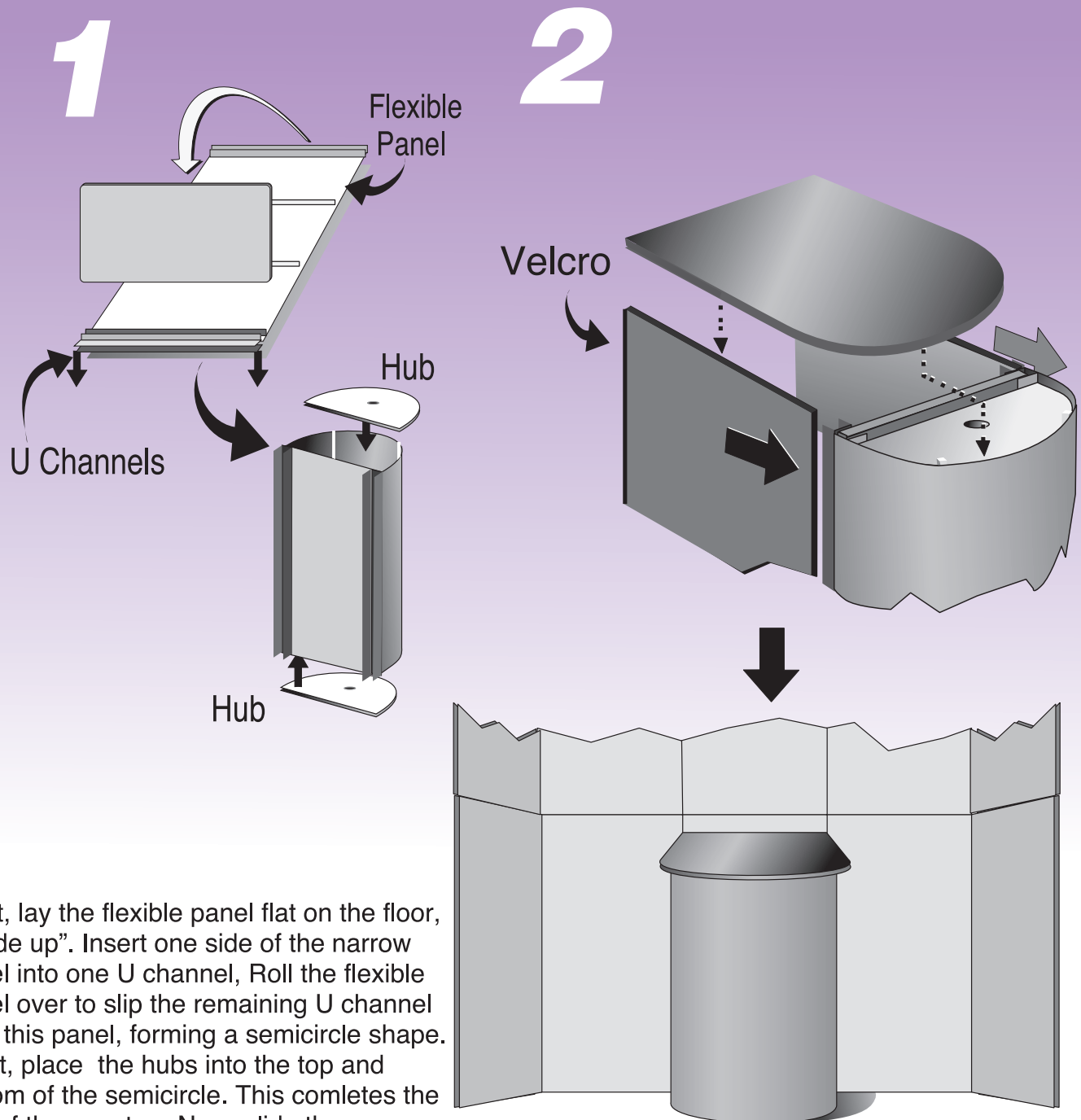


Curved Counter Instructions



First, lay the flexible panel flat on the floor, “inside up”. Insert one side of the narrow panel into one U channel, Roll the flexible panel over to slip the remaining U channel onto this panel, forming a semicircle shape.

Next, place the hubs into the top and bottom of the semicircle. This completes the end of the counter...Now, slide the side panels into the back “U” channels to make supportive sides for the counter.

Finally, place the top on and attach the completed counter to the unit with the velcro at the rear of the side panels.

Visit goExpogo.com

ExPoGo!
ExpoStar®Prezenta®ArchiForm®

(800)-891-1869